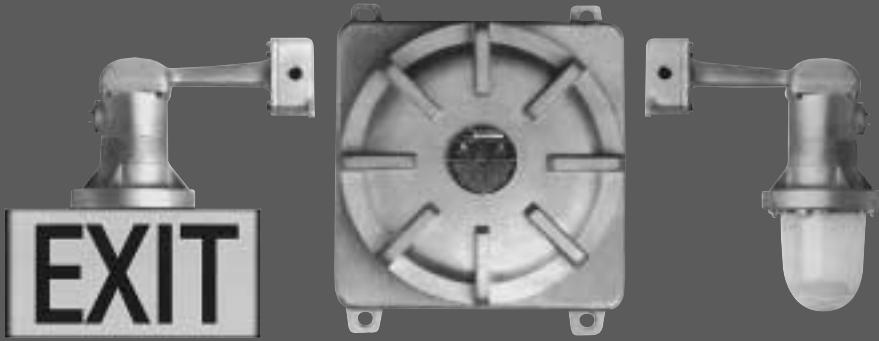


G700 SERIES EXPLOSION-PROOF EMERGENCY SYSTEM

Custom Flexibility In Explosion-Proof System



FEATURES

- Explosion-proof
- Dust tight
- Fluorescent & incandescent
- General illumination
- Low voltage battery disconnect
- AC lock-out
- Brownout protection

BENEFITS

- Rugged construction
- Variety of lamps
- Versatile usage
- Minimum maintenance
- Easy installation
- Remote heads

APPLICATIONS

- Petrochemical
- Munitions areas
- Grain elevators
- Fuel storage
- Gas storage

Specifications/Features

GENERAL

- Emergency egress lighting and EXIT signage.
- Designed to meet NFPA Life Safety, OSHA, NEC, local and state codes.
- 6 or 12 volt units.
- Battery operates multiple fixtures or signs.
- PL13 (2 heads limit).

CONSTRUCTION

- Die-cast copper free aluminum housings.
- Easy access lamp compartment.
- Lamp compartment sealed from wiring chamber.
- Easy access to fixture wiring compartment.
- External mounting lugs for easy installation.
- Large screw cover opening to access battery and wiring.

LAMPS & LENS

- Heat and impact resistant clear glass.
- Double contact incandescent lamps available in 5 to 22 watts.
- PL13 fluorescent.

ELECTRICAL

- Dual 120 or 277 VAC input.
- Long life maintenance free pure lead battery.
- 1-1/2 hours of light to an end battery voltage of 87-1/2% of nominal voltage.
- Remote fixture capability available on select models.



Rugged copper free aluminum control housing features quick access threaded front cover.



External mounting lugs for easy installation.



ELECTRONICS

- Automatic transfer switching circuit.
- Automatic, temperature compensating, variable rate float charger; 24 hour recharge.
- Solid-state line-latched low voltage disconnect circuit guards against deep discharge of battery.
- Disconnect circuit protects DC output from short circuit, overload and surges.
- Brownout monitor activates unit at preset low AC voltage.
- Push to test switch.
- AC ready light.



LISTING

- Listed Class I, Div 1 or 2, Groups C & D. Class II, Div 1 or 2, Groups E, F, & G.



700 GEL1-GES1

	CATALOG NUMBER	DESCRIPTION	DC VOLTAGE	DC WATTAGE	INPUT VOLTAGE	WT.
	G700	System Control Housing	6	15	120 or 277 VAC	30 lbs.
	G701		6	25		30 lbs.
	G702		6	36		30 lbs.
	G703		6	50		50 lbs.
	G704		6	75		50 lbs.
	G720	System Control Housing	12	30	120 or 277 VAC	30 lbs.
	G721		12	50		50 lbs.
	G722		12	75		50 lbs.
	G744			PL13Δ		50 lbs.

FACTORY INSTALLED OPTIONS†

	CATALOG NUMBER	DESCRIPTION	WT.
	-EL1-**	Single lighting head, specify lamp	12 lbs.
	-EL2-**	Double lighting head, specify lamp	34 lbs.
	-EL3-**	Three lighting head, specify lamp	36 lbs.
	-ES1-**-**Δ	Single face exit sign, wall mount, specify lamp, normally off	16 lbs.
	-ES2-**-**Δ	Double face exit sign, wall mount, specify lamp, normally off	
	-ES3-**-**Δ	Double face exit sign, ceiling mount, specify lamp, normally off	
	-220	220-50Hz VAC input	
	-TD-120	Time delay monitor-120 VAC	
	-TD-277	Time delay monitor-277 VAC	

REMOTE OPTIONS

	CATALOG NUMBER	DESCRIPTION	WT.
	760-**	Single lighting head, specify lamp, pendant mount	12 lbs.
	761-**	Single lighting head, specify lamp, wall mount	24 lbs.
	762-**	Single lighting head, specify lamp, ceiling mount	36 lbs.
	770-**-**	Exit sign, pendant mount, specify lamp, specify single or double face	16 lbs.
	771-**-**	Exit sign, wall mount, specify lamp, specify single or double face	
	772-**-**	Exit sign, ceiling mount, specify lamp, specify single or double face	

FIELD INSTALLED OPTIONS

CATALOG NUMBER	DESCRIPTION	WT.
785	Wire Guard — single lighting head	2 lbs.

* Specify Red letters (R), on white background, or Green letters (G), on white background.

** Specify lamp wattage. Refer to lamp selection table.

† Indicate on sales order left and/or right side, or center positions of factory installed emergency lights and exit signs.

Δ Must specify normally on or normally off.

Light Output*

CATALOG NO.	1-1/2 HRS.	2 HRS.	3 HRS.	4 HRS.
G700	15	12	8	6
G701	25	19	13	9
G702	36	27	18	14
G703	50	38	25	19
G704	75	57	38	28
G720	30	23	15	12
G721	50	38	25	19
G722	75	57	38	28

*Capacity in wattage to 87-1/2% Nominal Voltage.

Lamp Selection







Double Contact Incandescent

SUFFIX	VOLTS	WATTS
-21	6	6
-27	6	8
-26	6	12
-28	6	18
-29	6	22
-65	12	5
-104	12	8
-102	12	12
-99	12	16
-67	12	22
-109	120	PL13

Guth utilizes the services of U.L. and ETL for listing products. Specifications and data are subject to change without notice.

GUTH[®]
a GENLYTE company
E 1
R9/07

Suggested System Configurations

	CATALOG NUMBER	DESCRIPTION	DC VOLTAGE	AVAILABLE WATTAGE
	G700	System Control Housing	6	15
	G701		25	
	G702		6	36
	G703		50	
	G704		75	
	G720	System Control Housing	12	30
	G721			50
	G722			75
	G700-722 -EL1-**	System Control Housing, select model Single lighting head, factory installed, specify lamp wattage (**)		
	G700-722 -EL2-**	System Control Housing, select model Double lighting head, factory installed, specify lamp wattage (**)		
	G700-722 -EL1-**	System Control Housing, select model Single lighting head, factory installed, specify lamp wattage (**)		
	-ES1-*-**	Single face exit sign, factory installed-specify lamp wattage (**)		
	G700-722 -ES1-*-**	System Control Housing, select model Single face exit sign, wall mount, factory installed, specify lamp wattage (**)		

*Specify Red letters (R), on white background, or Green letters (G), on white background. **Specify lamp wattage. Refer to lamp selection table. FOR FIELD INSTALLATION ORDER REQUIRED SYSTEM CONTROL HOUSING AND REQUIRED FIELD INSTALLED FIXTURES. THE TOTAL LAMP WATTAGE OF ALL FIXTURES MUST NOT EXCEED THE AVAILABLE WATTAGE RATING OF THE SELECTED SYSTEM CONTROL HOUSING.

AVAILABLE SYSTEM WATTAGE

The total lamp load of all connected emergency lights and exit signs (total number of bulbs times bulb wattage), must not exceed the wattage rating of the System Control Housing.

ACCESSORIES

Reference the Accessories Section of the Catalog for a complete listing.

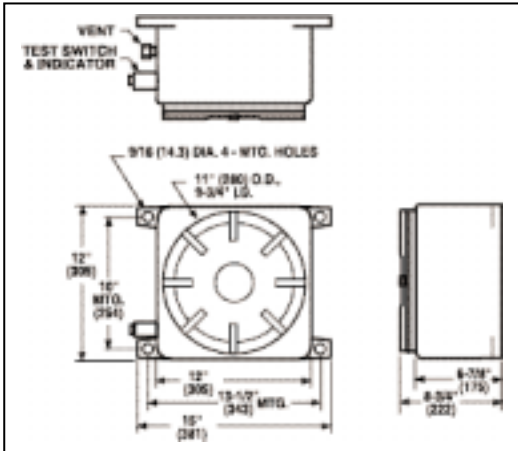
BATTERIES

Provided with each Guth Explosion-Proof System is a Pure Lead long life maintenance free battery that will provide many years of dependable service.

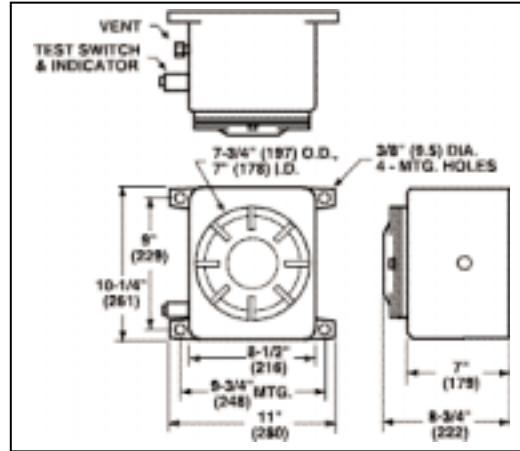
Project Name:

Type	Catalogue Number	Lamp	Comments

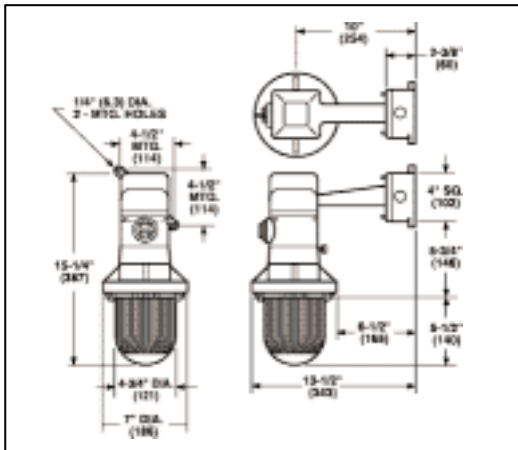
Explosion-Proof Series Specifications



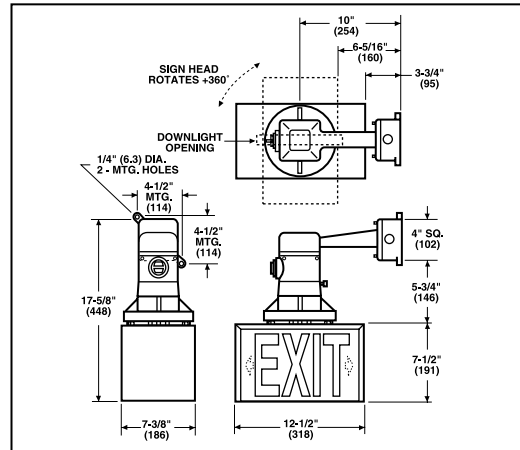
System Control Housing
Models G703, G704, G721, G722



System Control Housing
Models G700, G701, G702, G720



Emergency Light



Exit Sign

Note: Dimensions are in inches and millimeters.