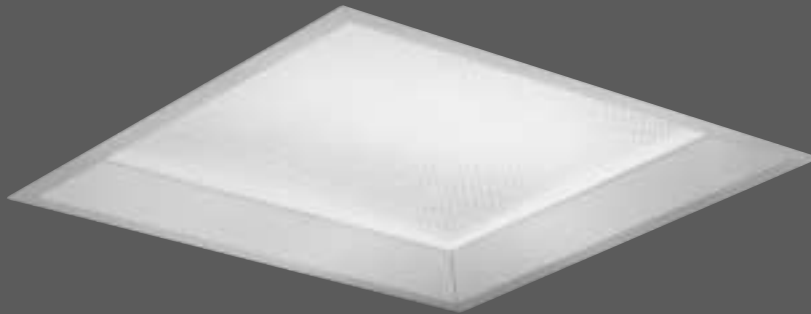


# SQUARELUME™ PL

## New Recessed Square For "Wet Location" Environments



### FEATURES

- 1 To 3 PL lamps
- Wet location listed
- Aluminum, stainless steel or CRS door
- Vandal resistant option
- Grid or flange mounting

### BENEFITS

- High lumen package
- Instant on lamps
- Resists abuse
- Indoor & outdoor use
- Non-yellowing optics

### APPLICATIONS

- Clean, corrosive and dirty environments
- Canopies
- Corridors
- Commercial
- Schools
- Hospitals

## Specifications/Features

### GENERAL

- Recessed 12" square, sealed and gasketed, compact fluorescent.
- Utilizes Twin Tube, Quad Tube, Double D, and Linear Quad Lamps.

### CONSTRUCTION

- 22 ga. CRS housing finished in baked white epoxy/polyester powder coat.
- 20 ga. Galvanized mounting frame for grid, drywall and plaster ceilings.
- Hem on bottom of mounting frame eliminates sharp edge for safety in installation and maintenance.
- Sliding bar hangers available for tee bar or wood joists. Swing mounting brackets provided with flange mounts.
- Side 1/2" conduit knockouts for easy thru wiring.
- Reflector/lamp socket assembly removable without tools for easy access to ballast and wiring compartment.
- Reflector safety chained to housing.

### DOOR FRAME/LENS

- Extruded aluminum regressed door frame finished in baked white epoxy/polyester powder coat for corrosion resistance.
- Optional flat Stainless Steel or CRS door frame.
- Door frame secured to housing by twin torsion springs for quick lamp access.
- Optional tamper resistant screws.
- Door frame gasketed at ceiling interface with closed cell polyethylene gasket to preclude water and minimize insect intrusion.



*Wiring is fast through top side removable access plate.*



*1,2,3 lamp reflector provides 95% reflectance factor and angular shape for wide distribution.*



*After mounting frame is installed, entire unit can be wired and lamped, then lifted into plenum.*

- Lens is .125" thick Acrylic Prismatic, gasketed to door frame with closed cell polyethylene gasket.
- Optional drop opal glass lens available.

### LISTINGS

- Listed for Wet Locations — Covered Ceilings Only.
- Listed for Through Wiring — 4 #12 AWG.
- Listed for use in U.S. and Canada.

### ELECTRICAL

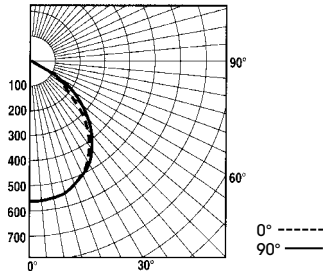
- Electronic ballasts standard.
- Ballasts mounted to housing with stake-in screws.
- Removable wiring access plate with 2-1/2" conduit K.O.'s.
- All fixtures carry the IBEW Union label to ensure quality.

# Photometrics

Coefficients of Utilization  
2 Lamp, 18W Quad, F6G-12218T1AC1

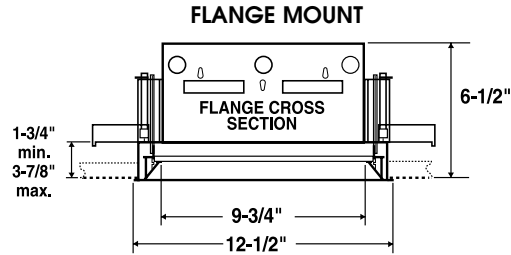
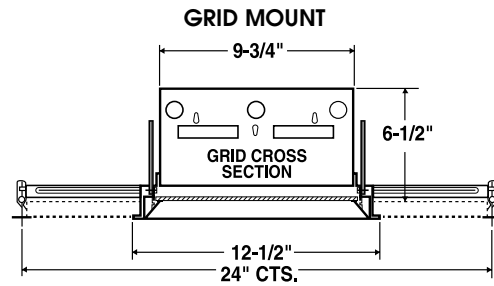
Ceiling Refl.	80%				50%				10%					
Wall Refl.	70	50	30	10	50	30	10	50	30	10	70	50	30	10
RCR	20% Effective Floor Cavity Reflectance													
1	.53	.51	.50	.48	.48	.47	.46	.45	.44	.43				
2	.49	.46	.43	.41	.43	.41	.39	.40	.39	.38				
3	.45	.41	.37	.35	.39	.36	.34	.36	.34	.33				
4	.42	.37	.33	.30	.35	.32	.30	.33	.31	.29				
5	.39	.33	.29	.26	.32	.28	.26	.30	.27	.26				
6	.36	.30	.26	.23	.29	.26	.23	.27	.25	.23				
7	.33	.27	.24	.21	.26	.23	.21	.25	.22	.20				
8	.31	.25	.21	.19	.24	.21	.19	.23	.20	.18				
9	.29	.23	.19	.17	.22	.19	.17	.21	.19	.17				
10	.27	.21	.18	.15	.21	.18	.15	.20	.17	.15				

S/MH Ratio 40°-1.36  
Total Lamp Lumens 1,250 per lamp  
Multiplier: 1.152 1-Lamp/.888 3-Lamp



Report No.  
P11446B

# Dimensions



# SquareLume PL Catalog Numbers

## F6 G - 12 - 1 - 13 - T - 1 - AP3 - 1

**MOUNTING**  
F - Flange  
G - Grid  
J - Wood Joist

**SIZE**  
12" Square

**NUMBER OF LAMPS**  
1 - 1 Lamp  
2 - 2 Lamp  
3 - 3 Lamp

Wattage	Type	#Available per Fixture	Lamp Base
13	Twin Tube	1, 2, 3	GX23
16	Quad	1, 2, 3	GX32d-1
18	Biax	1, 2, 3	2G11
18	Quad	1, 2, 3	G24d-2
26	Quad	1, 2	G24d-3
28	Linear Quad	1, 2	2G11
38	Double D	1	GR10G

**VOLTAGE**  
1 - 120V  
2 - 277V (16w Quad and 28w Linear Quad, 120V only)

**LENS**  
AP3 - .125 Acrylic prismatic P-12 Pattern  
C73 - .156 Prismatic Tempered Glass  
PC1 - .125 Polycarbonate Clear  
OPL - Opal Drop Lens  
PP1 - .125 Polycarbonate Prismatic P-12 Pattern  
TX - Tufflex Glass

**FRAME**  
1 - White Regress  
2 - Black Regress  
3 - White Overlap  
4 - Black overlap  
5 - Stainless Overlap

**LAMP TYPE**  
T - Twin Tube  
Q - Quad  
B - Biax  
L - Linear Quad  
D - Double D

# Options

- "/0 Deg." - 0 Degree, 18W Quad G24q-2 Base and 26W Quad G24g-3 ONLY
- "/Dim" - Dimming Ballast, 18W Quad G24q-2 Base and 26W Quad G24g-3 ONLY
- "/FF" - Fixture Fuse
- "/TP" - Tamper Proof
- "/RIF" - Radio Interference Filters
- "/L" - Lamp included
- "/BEF" - Emergency Battery available for 1 or 2 lamp; 13W, 16W, 18W, 26W

Consult factory for other configurations.

# Project Name:

Type	Catalogue Number	Lamp	Comments

Guth utilized the services of U.L. and ETL for listing products. Specifications and data are subject to change without notice.