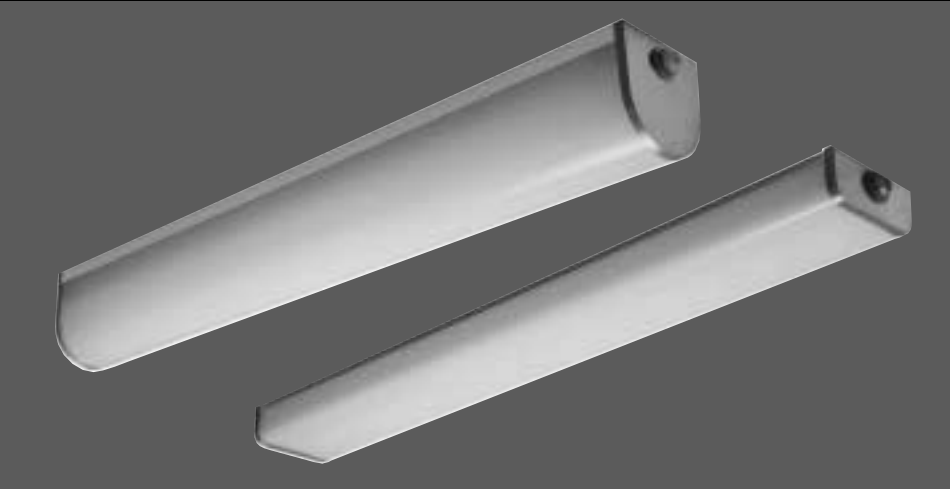


ML SERIES

Sealed and Gasketed, Surface Wrap, Fluorescent



FEATURES

- Sealed & gasketed
- Stainless steel end caps
- Wet location listed
- Optional stainless steel housing

BENEFITS

- Long life
- Industrial grade construction

APPLICATIONS

- Kitchens
- Corrosive industrial areas
- Tunnels
- Locker rooms
- Restrooms
- Canopies

Specifications/Features

GENERAL

- Surface mounted, sealed and gasketed, fluorescent wrap.
- Utilizes T-8 and T-12 fluorescent lamps.
- General Wet Location fixture.

CONSTRUCTION

- Double thickness, welded, 19 gauge, die-formed, CRS housing provides extra rigidity. KO's provided on back to quicken installation.
- Post coated housing, finished in white, 90% reflectance, baked enamel for superior photometries.
- Stainless steel (20 gauge) housing available.
- Welded end hubs allow easy electrical raceway entry; securely fasten and seal end plates.
- End plates — constructed from corrosion-resistant, brushed, 20 gauge, stainless steel — contribute to a finished appearance.
- Closed-cell neoprene gasketing. Located on the end plates and in side channels, keeps the inside dry in wet locations.

LENS

- A 1/8" thick acrylic lens is smooth on the outside for ease of cleaning, but patterned on the inside to enhance photometric performance.
- The white translucent lens provides a soft light.
- White polycarbonate lens available.

ELECTRICAL

- Standard ballasts are 120v, Class P, HPF, magnetic, Energy Saving Ballasts.



Closed cell neoprene gasketing, keeps the inside dry in wet locations.



Welded end hubs allow easy electrical raceway entry; securely fasten and seal end orates.

- Electronic ballasts available.
- Emergency battery pack available.

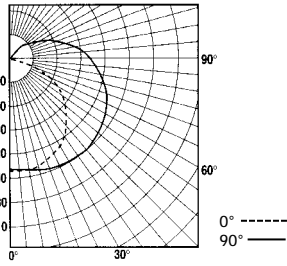
LISTINGS

- Listed for Damp Locations.
- Listed for Wet Location.
- All fixtures carry the IBEW Union label to ensure quality.

Photometrics

Coefficients of Utilization
2L 40WT12 4ft. White Acrylic
MLR-W-4-2F40 A-1 ROUND

Ceiling Refl.	80%			70%			50%		
Wall Refl.	50	30	10	50	30	10	50	30	10
RCR	20% Effective Floor Cavity Reflectance								
0	68	68	68	65	65	65	59	59	59
1	57	54	51	54	52	49	49	47	45
2	49	44	40	46	42	39	42	39	36
3	42	37	33	40	36	32	37	33	29
4	37	32	27	35	30	26	32	28	24
5	33	27	23	31	26	22	28	24	20
6	29	23	19	28	22	19	25	21	17
7	26	20	16	25	20	16	23	18	15
8	23	18	14	22	17	14	20	16	13
9	21	16	12	20	15	12	18	14	11
10	19	14	11	18	13	10	17	12	10

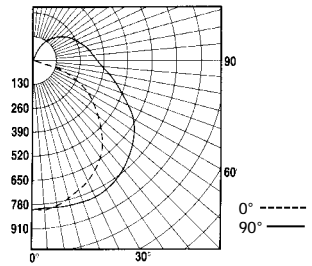


Report No.
P11454-1

S/MH Ratio 1.6:1
Total Lamp Lumens 3,150
Fixture Efficiency 60.3%

Coefficients of Utilization
2L 40WT12 4ft. White Acrylic
MLS-W-4-2F40 A-1 SQUARE

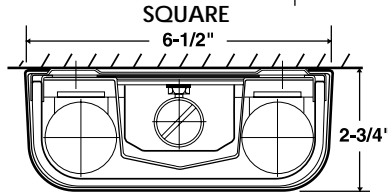
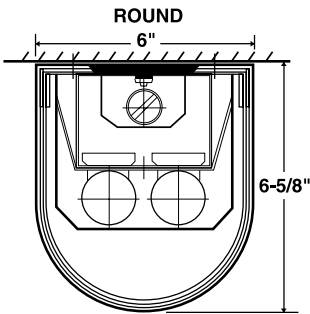
Ceiling Refl.	80%			70%			50%		
Wall Refl.	50	30	10	50	30	10	50	30	10
RCR	20% Effective Floor Cavity Reflectance								
0	66	66	66	63	63	63	58	58	58
1	56	53	51	54	51	49	49	47	45
2	48	44	40	46	42	39	42	39	36
3	42	37	33	40	36	32	37	33	30
4	37	32	28	36	31	27	33	29	25
5	32	27	23	31	26	22	29	24	21
6	29	24	20	28	23	19	26	21	18
7	26	21	17	25	20	17	23	19	16
8	23	18	15	22	18	14	21	16	13
9	21	16	13	20	15	12	18	14	12
10	19	14	11	18	14	11	17	13	10



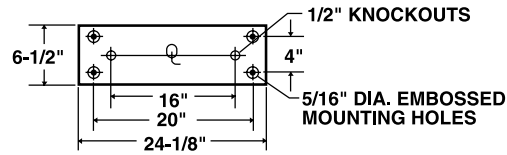
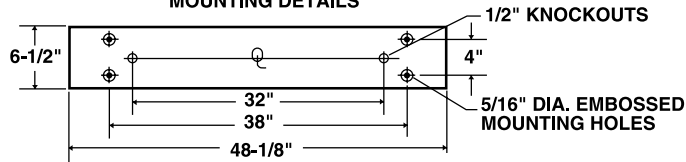
Report No.
P11454-2

S/MH RATION 1.5:1
Total Lamp Lumens 3,150
Fixture Efficiency 57.9%

Dimensions



MOUNTING DETAILS



Multilume Catalog Numbers

MLR - W - 4 2 F40 A - 1

FIXTURE SHAPE
R - Round
S - Square

LISTING
W - Wet
D - Damp

LENGTH
4 - 4'
3 - 3'
2 - 2'

NUMBER OF LAMPS
1 - 1 Lamp (MLR only)
2 - 2 Lamp

VOLTAGE
1 - 120
2 - 277

LENS
A - White Acrylic
P - White Polycarbonate

LAMPS
F172 - T8 Octron 17W
F25 - T8 Octron 25W
F32 - T8 Octron 32W
F20 - T12 Rapid Start 20W
F30 - T12 Rapid Start 30W
F40 - T12 Rapid Start 40W
F60 - T12 High Output 60W (MLR only)

Options

- "/SSH" - Stainless Steel Housing
- "/BEF" - Emergency Lighting Battery Pack
- "/FF" - GLR Fixture Fuse
- "/SFF" - GMF Slow Blow Fuse
- "/EB" - Electronic Ballast

Notes:

Refer to corrosion resistance charts for suitability to any application.

All polycarbonate is subject to crazing and yellowing when exposed to UV light.

Some chemicals may cause polycarbonate to craze.