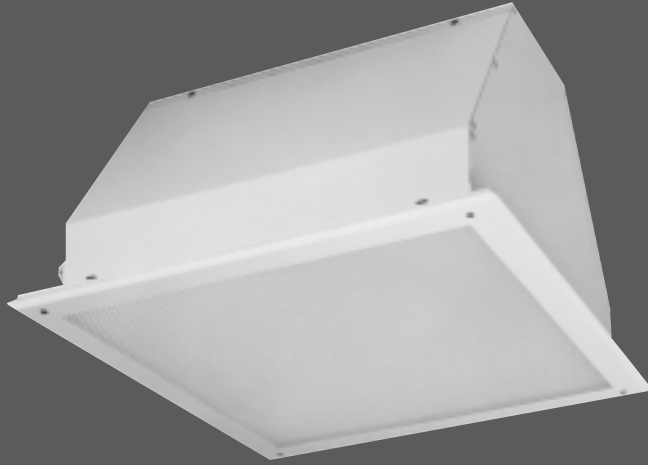


KLEENSEAL KHR™ 200 SERIES

Recessed H.I.D. Sealed and Gasketed



FEATURES

- Aluminum housing
- Sealed construction
- Removable top plate
- Overlap door
- High efficiency optical
- NSF International
- 200 PSI hosedown

BENEFITS

- Easy installation
- Top or bottom access
- Requires less fixtures
- Corrosion resistant

APPLICATIONS

- Food processing
- Pharmaceutical cleanrooms
- Animal containment
- Locker rooms
- Chemical plants

Specifications/Features

GENERAL

- Recessed sealed and gasketed.
- H.I.D. unit up to 400 watt lamps.
- Standard flange unit fits ceilings up to 3 inch thick. Optional unit fits 3 to 6 inch ceiling thickness.
- Designed for flange or 1", 1-1/2" or 2" grid mounting.
- 2" grid unit will fit most gasketed or gel systems.

CONSTRUCTION

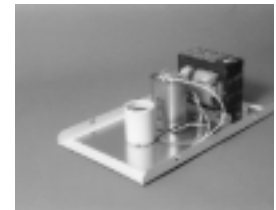
- Sealed and gasketed .040 aluminum housing prepainted in white acrylic enamel for added corrosion resistance.
- Seismic support mounting feature standard.
- Stainless steel housing optional.

DOOR FRAME/ LENS

- Door is standard double thick, 20 gauge overlap painted steel.
- Overlap stainless and flush aluminum (painted or anodized) door frames are optional.
- Lens is silicone sealed to door frame.
- Door frame retained to housing when opened for safety and ease of relamping.
- Door frame secured to housing by captive stainless steel screws.
- Optional tamper resistant screws available.
- Door frame gasketed to housing with closed cell polyethylene gasket.
- Silicone gasket is optional.



Standard double thick overlap painted steel door.



Electrical components accessed through bottom or top of fixture.

- Standard lens is .200" High Temperature Acrylic. C73 glass, Drop Acrylic or Clear Polycarbonate underlay optional.
- Lens installed prisms up standard. Prisms down is optional.

ELECTRICAL

- Ballasts are CWA or regulated types and appropriate to the specified lamp and voltage.
- All electrical components can be accessed through the bottom or top of the fixture.
- All fixtures carry the IBEW Union label to insure quality.

LISTINGS

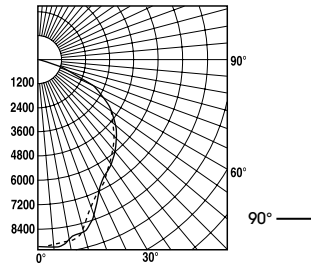
- Listed for Wet Locations —Covered Ceilings Only.
- NSF International.
- Hosedown Rating 200 PSI.

Photometrics

Coefficients of Utilization 400W CTD Lamp KH-2-G-400M-3-HTA-1 Hi-Temp Acrylic Prisms Up

Ceiling Refl.	80%			50%			10%		
	50	30	10	50	30	10	50	30	10
RCR	20% Effective Floor Cavity Reflectance								
1	.64	.62	.60	.60	.59	.57	.56	.55	.54
2	.57	.53	.49	.53	.50	.48	.50	.48	.46
3	.50	.46	.42	.48	.44	.41	.44	.42	.39
4	.45	.40	.36	.42	.38	.35	.40	.37	.34
5	.40	.34	.30	.36	.33	.30	.35	.32	.29
6	.35	.30	.26	.34	.29	.26	.32	.28	.25
7	.32	.27	.23	.30	.26	.23	.29	.25	.22
8	.29	.23	.20	.27	.23	.20	.26	.22	.19
9	.26	.21	.17	.25	.20	.17	.23	.20	.17
10	.23	.19	.15	.22	.18	.15	.21	.18	.15

S/MH Ratio 1.1
Total Lamp Lumens 36,000

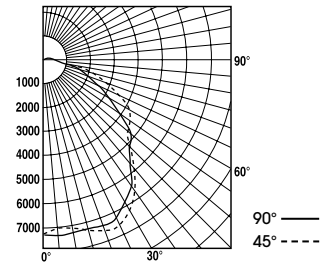


Report No.
P11461c

Coefficients of Utilization 400W CTD Lamp KH-2-G-400M-3-DRA-1 Drop Acrylic Lens

Ceiling Refl.	80%			50%			10%		
	50	30	10	50	30	10	50	30	10
RCR	20% Effective Floor Cavity Reflectance								
1	.67	.64	.61	.63	.60	.58	.57	.55	.54
2	.58	.53	.49	.54	.50	.47	.49	.46	.44
3	.51	.45	.40	.47	.42	.39	.43	.40	.37
4	.45	.38	.34	.42	.37	.33	.38	.34	.31
5	.40	.33	.29	.37	.32	.28	.34	.30	.27
6	.36	.29	.25	.33	.28	.24	.31	.27	.24
7	.32	.26	.22	.30	.25	.21	.28	.24	.21
8	.29	.23	.19	.28	.23	.19	.26	.22	.19
9	.27	.21	.17	.25	.21	.17	.24	.20	.17
10	.25	.19	.16	.24	.19	.16	.22	.18	.15

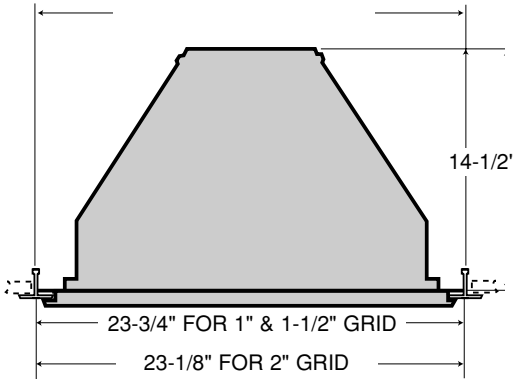
S/MH Ratio 1.4
Total Lamp Lumens 36,000



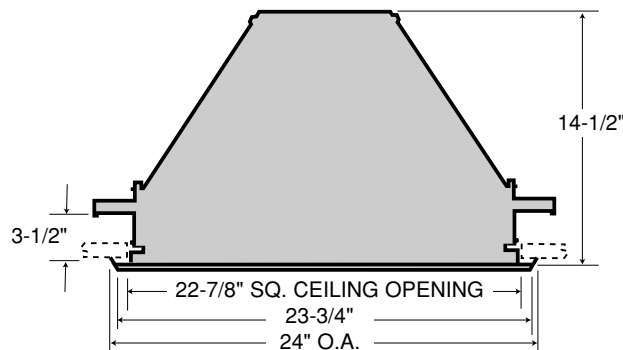
Report No.
P11463b

Dimensions

GRID SERIES



FLANGE SERIES



Kleenseal KHR™-200 Catalog Numbers

KH2 G - 400M - 3 - HTA - 1

KHR-200 SERIES

MOUNTING

G Grid (1" or 1-1/2")
F Flange
2G 2" Gasketed Grid
2J 2" Gel Grid (3/4" Knife Edge)

LAMP WATTAGE & TYPE

MH	HP
175 M	150 H
250 M	250 H
400 M	400 H

VOLTAGE
120 - 120V
277 - 277V

LENS (PRISMS UP STANDARD)

HTA High Temperature Acrylic
C73 Prismatic Tempered Glass
DRA Drop Acrylic -
Not available on #6 & #9 Door
UND Polycarbonate Underlay
(With C73 Prisms Down)

DOOR FRAME

3 CRS 1 Piece Overlap White
5 304 1 Piece Overlap Stainless
6 Extruded Aluminum 4 Piece Flush White
9 Extruded Aluminum 4 Piece Flush Anodized

Options

"/FF" - Fixture Fuse
"/TP" - Tamper Resistant Screws
"/SG" - Silicone Gasketing
"/IE" - Emergency Circuit (250W max.)
"/ISL" - Instant Stand-By Quartz (250W max.)
"/DN" - Lens Furnished With Prisms Down
"/CT" - Optional Ceiling Thickness

Metal Halide Note:

- Lamp manufacturers state" type E and S type lamps must be turned off for 15 minutes each week to prevent a non-passive failure"
- Type O rated lamps have no turn-off requirement. An optional pink socket will only accept O rated lamps.

Guth utilized the services of U.L. and ETL for listing products. Specifications and data are subject to change without notice.

GUTH
A DIVISION OF JJI LIGHTING GROUP, INC.

H 2
R4/00