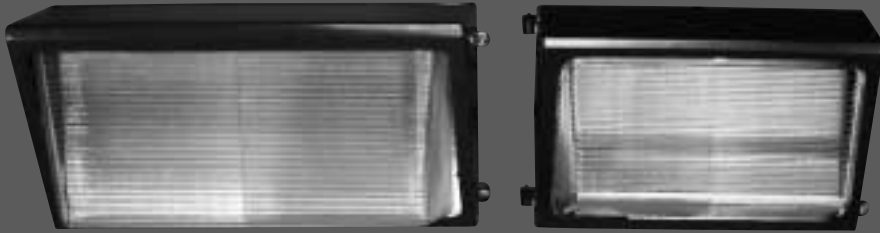


WALL-LITER FAMILY RESISTS SALTWATER CORROSION

Heavy Duty Copper-Free Die Cast Aluminum



FEATURES

- Up to 400 Watt H.I.D./L.P.S
- Glass or Polycarbonate Lens
- Asymmetric Anodized Reflector
- Vandal Resistant Shields
- Hinged Access
- Architectural Bronze Finish
- Outlet Box or Conduit Mounting

BENEFITS

- Footcandle Options
- Optimized Design
- Efficient Optics
- Uniform Appearance
- Easy Maintenance
- Long Service Life
- Versatile Installation

APPLICATIONS

- Perimeter Lighting
- Parking Areas
- Entrances and Walkways
- Loading Platforms
- Seacoast
- Schools
- Astronomy Areas

Specifications/Features

GENERAL

- Die cast aluminum wall mount fixture family in 4 sizes.
- 70-400 H.I.D. and 35W L.P.S.
- Hinged access with stainless steel hardware.
- Optional polycarbonate vandal shield or wire guard.

HOUSING

- Heavy duty die cast aluminum.
- Copper free 360 alloy aluminum resists salt water corrosion.
- Front frame is hinged and secured to back casting with stainless steel screws.
- Dark bronze powder coat standard.
- High temperature silicone gasket provides durable weather seal.
- 1/2" threaded conduit or photocell entry at top and side. Two side entries allows thru wiring on medium 15" fixture.

LENS/OPTICS

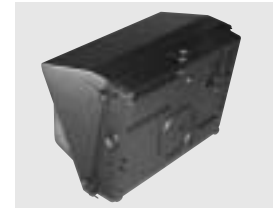
- High impact non-yellowing borosilicate glass.
- Impact-resistant polycarbonate with UV inhibitors (Use with low UV-HPS lamps).
- Asymmetric anodized reflector provides high efficiency and up to 5 to 1 spacing.

ELECTRICAL/LISTINGS

- HPF core and coil ballasts.
- Listed for damp & wet location.
- Medium housing has 2 side and 1 top 1/2" NPT threaded entry.
- Larger housings have 1 top, side and bottom 1/2" NPT threaded entry.



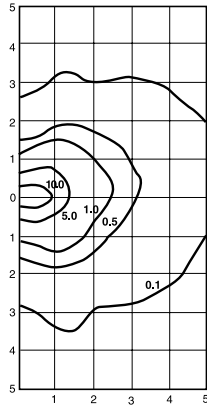
Copper free aluminum casting resists corrosion from sea water, sulfur gases and ammonium nitrate.



Multiple NPT conduit entry points provide installation versatility.

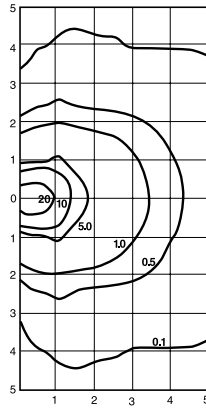
Photometrics

WL-20-G-175M-1
175W Metal Halide CLR



Ratio = $\frac{\text{Distance}}{\text{Mounting}}$
Total Lamp Lumens 14,000

WL-25-G-400M-1
400W Clear Lamp



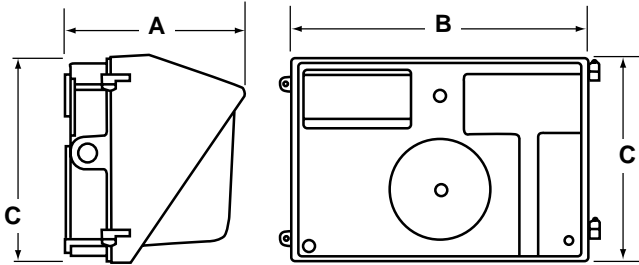
Ratio = $\frac{\text{Distance}}{\text{Mounting}}$
Total Lamp Lumens 36,000

MOUNTING HEIGHT CONVERSION CHART*

Mounting Height	Footcandle Multiplier
8'	1.56
10'	1.00
12'	.69
14'	.51
16'	.39
18'	.31
20'	.25
22-1/2'	.20
25'	.16

*Photometrics taken with 10' mounting height. For other mounting heights, use footcandle multiplier above.

Dimensions



	Side		Back	
	A	B	C	
Small	7-1/2"	8-1/2"	9-3/8"	
Medium	7-1/4"	13"	9"	
Large	9-3/4"	17"	9"	
X-Large	13"	17"	9"	

Wall-Liter Catalog Numbers

WL 15 G 175 M

SERIES - Wall-Liter

SIZE

- 10 - Small
- 15 - Medium
- 20 - Large
- 25 - X-Large

LENS

- P - Polycarbonate (WL 10 only)
- G - Borosilicate Glass

M

LAMP AND WATTAGE

- 10 - SMALL (Polycarbonate or Glass Lens)
Available Jan 01, 2001
Medium Base Lamp
- 70H - 70 H.P.S.
- 70M - 70 M.H. (Glass Lens Only)
- 100H - 100 H.P.S.
- 100M - 100 M.H. (Glass Lens Only)

- 15 - MEDIUM (Glass Lens Only)
- 150H - 150 H.P.S.

- Medium Base Lamp
- 175M - 175 M.H.
Mogul Base Lamp

20 - LARGE

- Glass Lens
- Medium Base Lamp
- 150H - 150 H.P.S. (Glass Lens Only)
- Mogul Base Lamp

- 175M - 175 M.H.
- 250M - 250 M.H.
- 250H - 250 H.P.S.
- 35L - 35 L.P.S.

VOLTAGE

- 3 - 347V
- M - Multi-Tap (120, 208, 240, 277)

Options

- /WG - Wire Guard (Not available on WL 10)
- /PS - Polycarbonate Shield (Not available on WL 25)
- /PEC - Photo Electric Cell Kit

- 25 - X-Large (Glass Lens Only)
- Mogul Base Lamp
- 400H - 400 H.P.S.
- 400M - 400 M.H.

Project Name:

Type	Catalogue Number	Lamp	Comments

GUTH[®]

a GENLYTE company

0 3.5
R10/06