

# What's A Special?

- It's many things -

At Guth, a Special means specific ambient, environmental or electrical needs for your project. And since Guth focuses on Lighting For Demanding Environments, we are exceptional at meeting stringent lighting requirements.

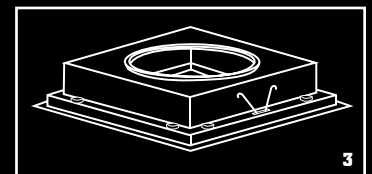
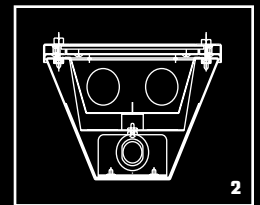
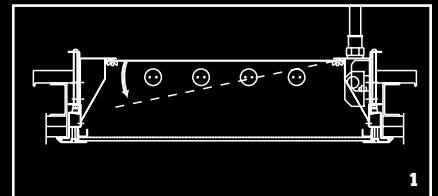
Examples:

1. Need a "plenum access" door for entry into shallow plenums? Guth did it. Particularly in Cleanroom Environments.
2. Need 304 stainless units "ground mounted" for uplight conditions? Guth did it. Transit Authority track application.
3. Need a recessed and sealed housing to interface with explosion proof H.I.D. unit? Guth did it. A cleanroom with explosion proof plenum requirement.

Remember, Guth "Did It," and nobody has done it more than Guth. Since 1902 we have been meeting special lighting requirements...it started with the "World's Fair" and it hasn't changed.

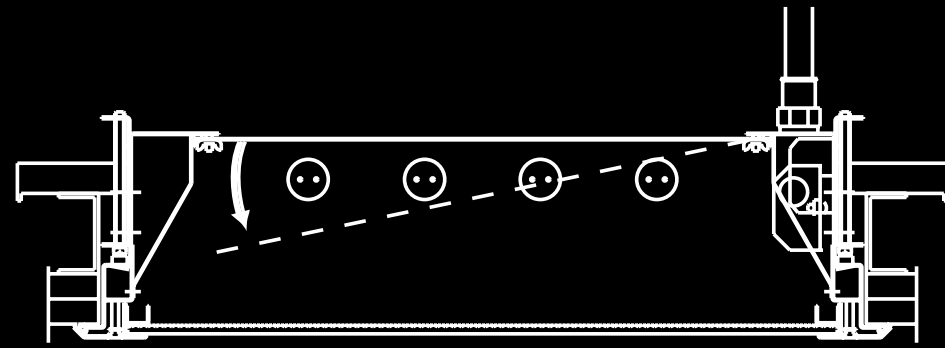
Call us, we like a challenge.

Thanks for thinking of Guth.



# SEALTROFF L

## Gasketed Plenum Access Door Featured In Sealed Unit



Totally sealed recessed fluorescent troffer for 2' x 4' flange ceiling opening. Gasketed door on top surface of fixture housing permits easy access into the plenum space from below the fixture.

Entire unit is sealed with BIO-SEAL door frame. The BIO-SEAL door frame provides the ultimate seal. The door is secured to the housing with twelve (12) gasketed and countersunk, no-loss stainless steel screws. Gasket is 1/4" thick closed cell silicone.

## Specifications/Features

### DESCRIPTION

- Totally sealed recessed fluorescent troffer for 2' x 4' flange ceiling opening.
- Gasketed door on top of fixture allows for easy access into the plenum space above the fixture.

### HOUSING

- 20 ga. CRS: 304 stainless steel available.
- White epoxy/polyester powder coat finish.
- All penetrations and joints silicone sealed.
- Unique "Sealed Junction Box" prevents contamination thru raceway system.
- Flange mounting only.
- Total adjustability of swing mount bracket is 2-1/4" (1" to 3-1/4" from ceiling face).
- Continuous row mounting optional.
- All rivets are closed end sealed rivets.
- Ceiling cutout dimension is 25-1/2" x 48-1/8".
- Plenum access opening is 18" x 36".

### DOOR FRAME

- Door frame and lens tested to 75 PSI hose pressure.
- One piece CRS standard, 304 stainless steel optional.
- White epoxy/polyester powder coat finish standard (Anodized aluminum optional).
- Stainless steel is brushed.

- Countersunk, no-loss Phillips stainless steel screws on 24" centers.
- Frame supported by chains for ease of maintenance.

### LENS

- Lens .125" thick Acrylic Prismatic, silicone sealed to door frame.
- Prisms up standard.
- Lens with prisms own optional.

### GASKET

- Gasket is 1/4" thick closed cell polyethylene.

### BIO-SEAL DOOR FRAME

- The Bio-Seal door frame provides the ultimate seal.
- The door is secured to the housing with twelve (12) gasketed, countersunk, no-loss Phillips stainless steel screws.
- Gasket is 1/4" thick closed cell silicone.

### LISTINGS

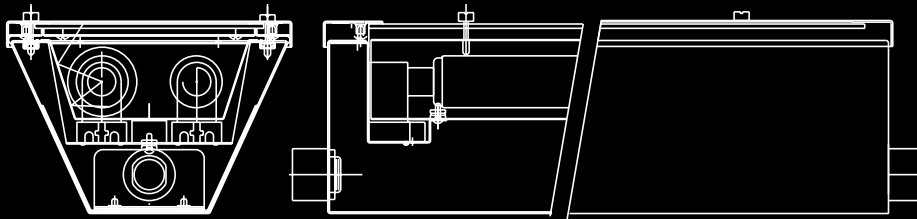
- U.L. Listed "Suitable for Wet Locations-Covered Ceiling only."

### ELECTRICAL

- Ballasts are HPS.
- Ballasts mounted to housing by stake-in screws.
- All fixtures are IBEW, Union made.

# METROLUME

## Inverted 304 Stainless Units For Transit Authority



Ground mounted Steeltite units are modified for Washington Metro Area Transit Authority track bed applications. The ground mounted upright fluorescent units feature a 20 gauge, corrosion resistant 304 stainless steel housing suitable for hosedown applications and the durability needed to withstand the wet and corrosive track bed application.

Guth units feature one piece seam welded 304 2B finish stainless steel door frames. Door design overlaps housing and acts as drip shield for upright application. Lens is 1/8" clear polycarbonate and is permanently factory sealed in door frame with silicone sealant. Listings include ETL and UL Listed Wet Location, Suitable for High Pressure Hosedown.

### Specifications/Features

#### VOLTAGE

277V.

#### BALLAST

Ballast to be 800 MA HPF Electronic ballast, -20°F starting temperature, Class P thermally protected, Type 1 outdoor. Heat removal to be provided with aluminum heat sink.

#### WATTAGE

110W.

#### DESCRIPTION

Fluorescent corrosion resistant 304 stainless steel surface mounted upright fixture for hosedown applications, designed for maximum lighting efficiency, energy savings, and durability in a wet and corrosive environment.

#### HOUSING

One piece seamwelded 304 2B finish stainless steel housing, 20 gauge, housing to be completely sealed and have no knockouts.

#### REFLECTOR

Internal specular aluminum reflector, designed for maximum efficiency and optimal performance. 83% reflectivity.

#### LAMP

8 foot 800 MA 2 light.

#### LENS

Lens to be 1/8" clear polycarbonate. Permanently factory sealed to the door frame with a 3/16" bead of silicone sealant. Lens/door frame surface contact to be a minimum of .375" around entire perimeter. Held in place with a continuous heavy gauge stainless steel lens clamp around entire perimeter.

#### DOOR FRAME

One piece seamwelded 304 2B finish stainless steel, 16 gauge. Designed to overlap housing and act as a drip shield in an upright application. Lens is permanently factory sealed to door

frame. Door frame to be gasketed with closed cell extruded neoprene sponge gasket. Gasket to be mechanically held in place, no adhesives. Gasket to be butted in corners for optimum seal. Gasket to be protected from direct exposure to hosedown by the overlap design of the door frame. Gasket to be compressed 50% when door frame is secured to housing.

#### LATCHING

Door frame to be hinged on one side with stainless steel hinge. Four (4) stainless steel bail latches secure other side, applying constant pressure between door frame and housing.

#### GASKET & SEALING

Silicone sealant to be suitable for sealing and bonding, with a temperature range of -85° to 400°F. Door frame gasket to be closed cell, oil resistant, extruded, neoprene sponge gasket for optimum performance in an environment where weather, water and compression set are a concern. Temperature range shall be -20°F to 160°F.

#### MOUNTING

Fixture designed for ground mounting upright only. Optional U-bolt conduit hub mounting brackets are available. Fixture position can be adjusted easily from top of bracket. Mounting brackets do not require any penetrations in the fixture housing.

#### FINISH

All 304 stainless steel parts to be 2B mill finished. All interior steel parts to be painted with white hybrid epoxy/polyester powder coat for optimum protection.

#### LISTING

ETL Listed Wet Location, Suitable for High Pressure Hosedown.

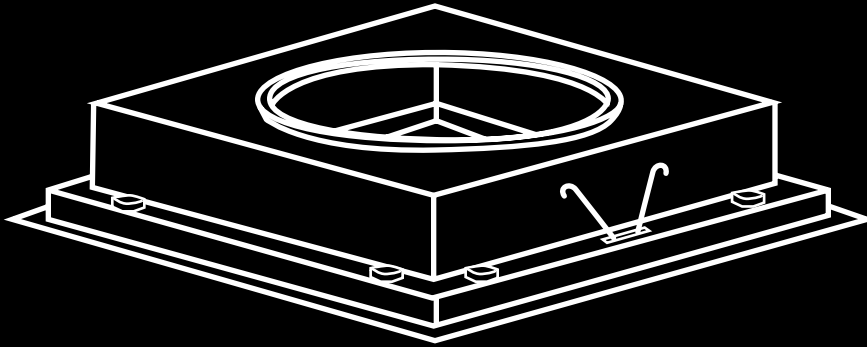
#### MISCELLANEOUS

All external fasteners are 304 stainless steel. Fixture to be supplied standard with two (2) sealed 3/4", 303 stainless steel conduit hubs and one (1) 303 stainless steel conduit hub plug. Maximum fixture dimensions to be as shown on specification drawing.

Consult factory for additional information and availability.

# HL5 2X2

## Remote Emergency Stand-by Unit Features Top Access



2' by 2' grid housing with sealed overlap door frame designed to be used in conjunction with a Class I, Division 1 H.I.D. unit.

Unit also features top access, 18" dia. gasketed door for lamp replacement without removing door frame inside cleanroom. Interior ambient protected by triple gasketing between lens/frame, frame/housing and frame/ceiling. Door is compression sealed with eight (8) stainless steel screws.

## Specifications/Features

### DESCRIPTION

- 2'x2' grid housing with sealed overlap door frame designed to be used in conjunction with a Class I, Division 1 H.I.D. unit.

### HOUSING

- 20 ga. CRS with white epoxy/polyester powder finish.
- All penetrations and joints silicone sealed.
- Top opening gasketed. 18" diameter.

### DOOR

- Stainless steel lens frame.
- Door retained to housing with torsion springs.
- Flush captive stainless steel screws.

### GASKET

- Triple gasketed between lens/frame, frame/housing and frame/ceiling.
- Gasket is 3/8" silicone.

### LENS

- C73 Tempered Glass.
- Other lenses available.