

SUNDOWNER™ Forward Throw LED – up to 18 year Maintenance Cycle

Earn LEED Energy Credits



FEATURES

- Cut- off Dark Sky optics
- Use 80% less energy
- 70,000 hour system life
- 4000K – 70CRI color
- Luxeon rebel LED's
- Diecast aluminum housing
- Stainless steel hardware
- Field replaceable components
- Five year limited warranty

BENEFITS

- Non obtrusive
- Lowest owning cost
- 16-18 year maintenance cycle
- Cool white maximizes visibility
- World class components
- Durable construction
- Long life components
- Easy maintenance
- Tested design

APPLICATIONS

- School facades
- Commercial buildings
- Theaters
- Universities
- Indoor walkways
- Tunnels
- Parking structures
- Doorways
- Adjacent parking areas

Specifications/Features

GENERAL

- Premium constructed LED wall mounted luminaire
- Lowest possible energy
- No maintenance for up to 18 years
- SNDFT-16L replaces up to 250MH

CONSTRUCTION

- Die cast hinged front and rear housing
- Built in template for electrical box mounting
- Stainless steel captive fasteners
- Polyester powder finish
- Adaptive LED optics
- Custom colors
- Continuous closed cell captive gasket
- LED obscuring stippled lens
- Heat sunk LED boards
- Low LED junction temperatures

LISTINGS/ELECTRICAL

- ETL wet location listed for US and Canada
- Electronic LED driver
- Five year limited warranty
- -40°F starting
- 28 Watts

Patent Pending Optics



SNDFT Optical Advantage

The patent pending optics puts 70% of the light on the task and only 5% hits the wall. The SNDFT-16L replaces up to 250MH with almost perfect uniformity.

HID and CFL wallpacks use reflectors to redirect the light. Efficiency is 35%-55%. Of that 20-30% hits the building wall and 15-20% goes straight down.



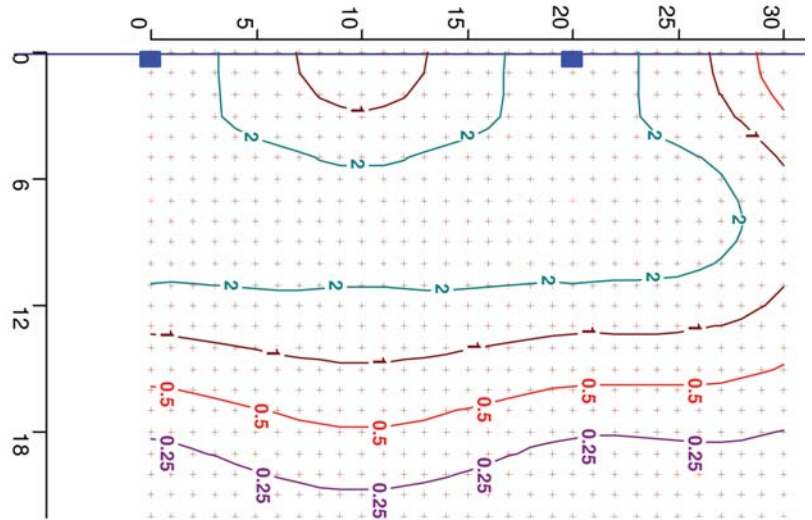
Photometrics

SNDFT-14B-16L-S
10' mounting - 20' spacing
Test # 14419

Note: To visualize actual visibility convert Horizontal FC to Vertical FC.
 Vert. FC = the Hor FC multiplied by the distance away from the fixture ÷ by 10

Vert vs. Hor FC on Ground

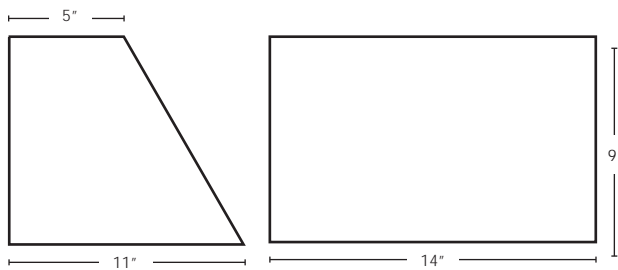
Dist. from SNDFT	FC Hor	FC Vert
10'	2	2
14'	1	1.4
16'	.50	.8



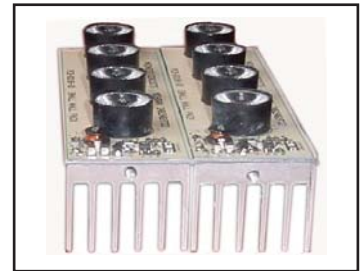
TEN YEAR OPERATING COST COMPARISON

Fixture	Hours/year	Lamp life	Relamp Cost	Watts	Cost/yr at .10 KWH	Power Cost	Total Cost
SND Forward Throw	4380	60,000	0	28	\$12.26	\$122.64	\$122.64
250 MH Wallpack	4380	12,000	\$250	291	\$127.46	\$1274.60	\$1524.60

Dimensions - 14"



Stippled Lens Hides LED's



LED Heat Sink

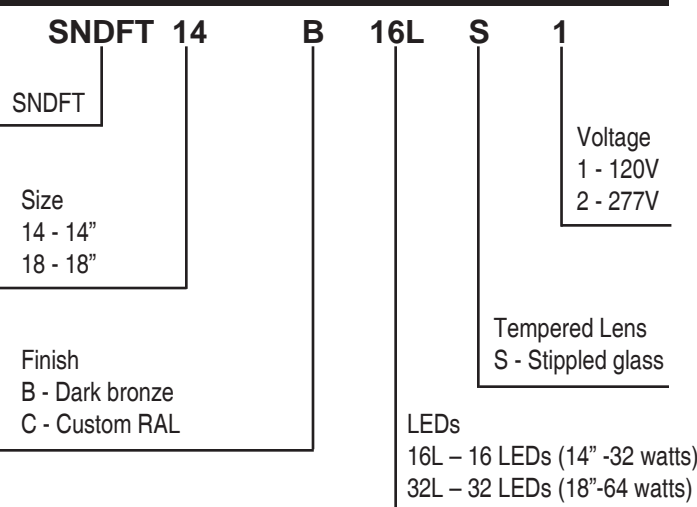


Wire Guard



Poly Guard and Yoke

SUNDOWNER LED Catalogue Numbers



Options

- "WG" - wire guard
- "/PG" - polycarbonate guard
- "YK" - adjustable mounting yoke (14" only)
- "PEC" - button photocell
- "PCDIM" - Adjustable occupancy sensor and photo-control (Watt Stopper PIR EW Series)
- "MPCDIM" - master adjustable sensor and photo-control. (1per 20 fixtures -Watt Stopper PIR EN series)

Note: Use Guth GPCF inverter for emergency lighting

Project Name:

Type	Catalogue Number	Comments

Guth utilizes the services of U.L. and ETL for listing products Specifications and data are subject to change without notice.